



Greatstone School Nursery  
Baldwin Road,  
Greatstone,  
New Romney,  
Kent  
TN288SY

**Head of School: Mrs Jaclyn Kay**  
**Assistant Head: Mrs Fiona Roberts**  
**Early Years Lead: Mrs Kate Bovingdon**  
**Nursery Lead: Mrs Nadia Leech**  
**Nursery Administrator: Mrs Lisa Ashdown**  
**Telephone: 01797 369162**  
**Email: [nursery@greatstoneschool.co.uk](mailto:nursery@greatstoneschool.co.uk)**  
**Website: [www.greatstoneschool.co.uk](http://www.greatstoneschool.co.uk)**

## **Attendance**

It is important for children to attend Nursery sessions unless they are unwell. Getting children into good routines and habits as young as possible supports their learning and development. However, if your child is unable to attend school due to illness please call the office, use the Parentmail app or email, on the first day of absence. If your child has had sickness and/or diarrhoea please allow 48 hours before returning them to school.

Please call 01797 369162 or email [nursery@greatstoneschool.co.uk](mailto:nursery@greatstoneschool.co.uk) or use Parent Mail

DO NOT use Class Dojo to inform us of an absence

## **Suitable Clothing**

School uniform is optional in Nursery but please dress your child in suitable clothing. They need to be able to run and climb and they will get their clothes dirty with paint, glue, mud, etc.

Suggestions: - • Jogging bottoms, t-shirt, Nursery sweatshirt/polo shirt. • Warm and waterproof coat and wellies • Shoes/trainers with Velcro straps. • Please put your child's name in all their clothes. • Please leave a spare set of clothes (including socks and underwear) in your child's tray (including underwear).

Nursery uniform can be bought direct from Lisa who will then charge the items to your child's Parentmail account. The uniform items that are already in your child's shop are for Primary school uniform and not Nursery.

## **The Early Years Foundation Stage**

*At Greatstone School Nursery, we aim to:*

support children to make a planned, confident transition from home to school

- provide a happy, caring, safe and secure environment for learning
- plan learning experiences that meet the individual needs and interests of the children through a balanced provision of adult led and child-initiated opportunities. This is led by the children's natural curiosity, supported by the environment and the practitioner's interactions with the children.
- support children to become competent and confident learners so they are able to reach their full potential
- provide a broad and balanced high-quality curriculum in line with the Early Years Foundation Stage guidance
- foster positive home school links with parents and other care providers.

## **Learning**

We deliver a curriculum based on the framework for the Early Years Foundation Stage. This describes the seven areas of learning and development which “must be implemented through planned, purposeful play”. The framework also states that “Practitioners must respond to each child’s emerging needs and interests, guiding their development through warm, positive interaction.” We have a fantastic team of adults who put this into practice every day. In addition, the framework describes “Three characteristics of effective teaching and learning ... playing and exploring ... active learning and creating and thinking critically.” These describe exactly the approach we take to learning in our foundation stage at Greatstone School Nursery. Throughout the year the Nursery children play, make friends, develop and learn. They have great fun, exploring and creating, indoors and outside. They gain independence and confidence and their natural curiosity is encouraged at all times.

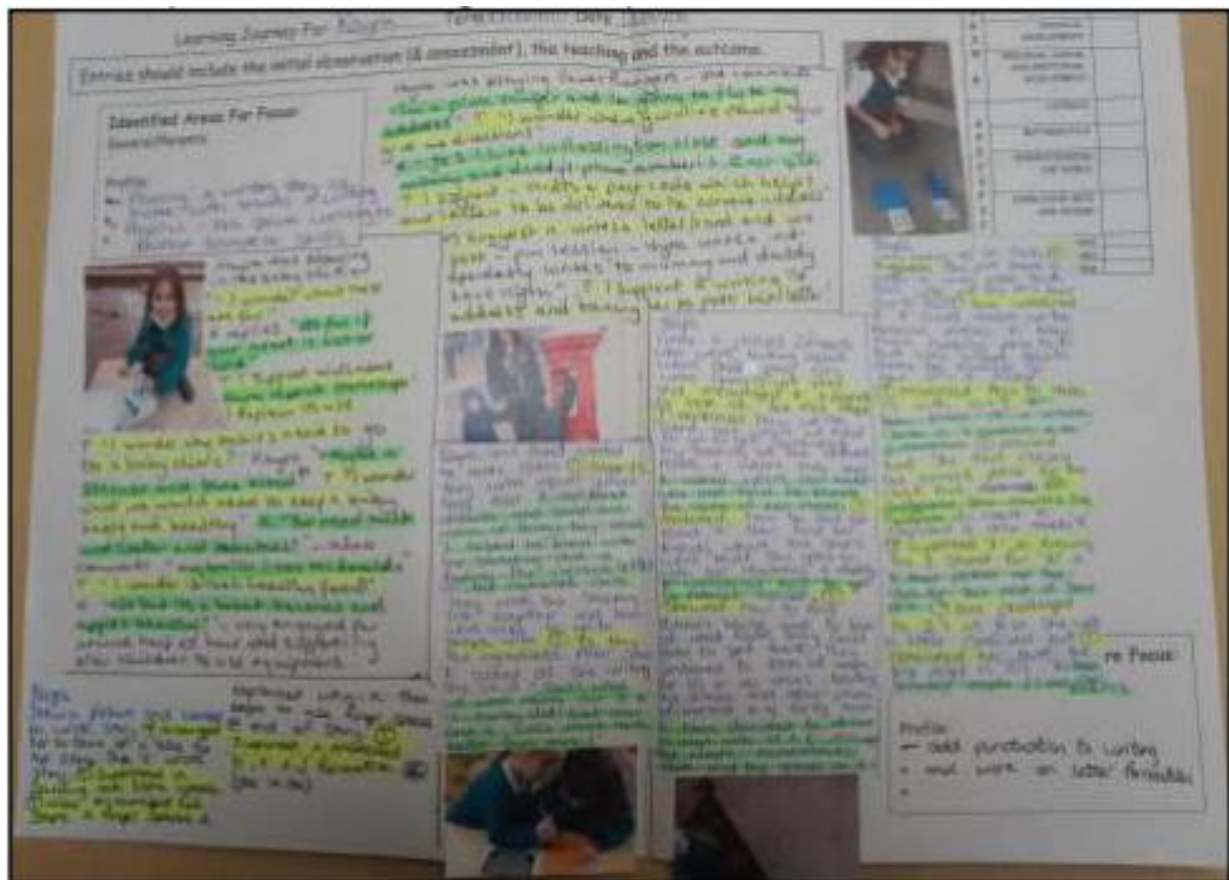
Another main focus for the children is to learn to be independent in their choices and decisions. We use the characteristics of effective learning to highlight where children can use their own initiative and use resilience to achieve their goals. For example, a child whom is trying really hard to open their crisp packet may be encouraged to use the ‘pinch and pull’ technique, or even use a pair of scissors. Once they have tried everything that they can to be independent, we would say that they have been a ‘Persevering Parrot’ and their efforts will be celebrated. The other characteristics of effective learning characters are as follows:

- Go for it Gorilla (I will have a go...)
- Proud Peacock (I am proud of what I do...)
- Exploring Elephant (I am an explorer)
- Concentrating Crocodile (I can join in and concentrate)
- Creative Chameleon (I have my own ideas)
- I know Rhino (I play with what I know)
- Choosing Chimp (I choose ways to do things)
- Slinky Linky Snake (I can make links)

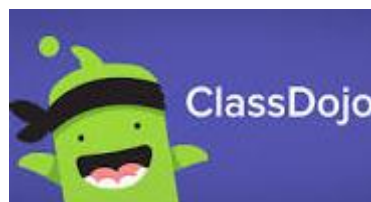
## **Focus Children**

Your child will be a focus child once a term. During their focus week the staff will record your child’s experiences on a Learning Journey sheet. When the week is over your child’s teacher will invite you to speak about their progress and to look at their learning journey.

### Example of a Learning Journey Sheet:



### ClassDojo:



ClassDojo is an educational technology communication app and website. It connects primary school teachers, children and families through communication features, such as a feed for photos and videos from the school day and messaging that can be translated into more than 35 languages. You will be given details of how to download and log in on a daily basis, to keep track of your child's day as well as keep up to date with the Head Teacher's regular blogs.

## ParentMail



When it comes to your children's education, there's so much to keep track of! ParentMail brings all your school information together in one simple, convenient application.

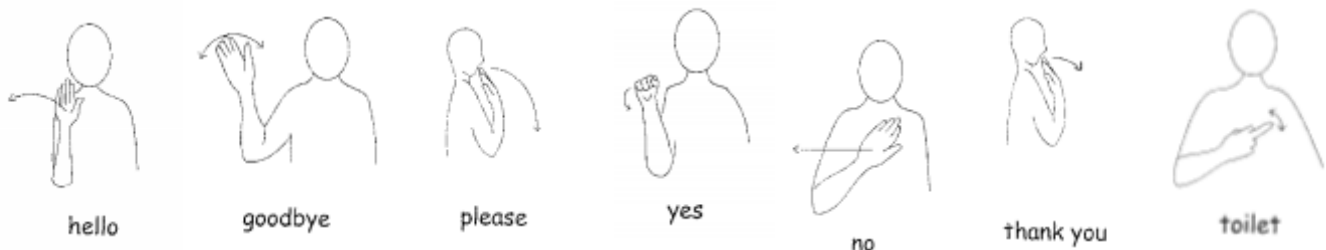
From the App, you can -

- Receive messages from the schools, clubs or nurseries your children attend
  - Easily pay for items and fees using your preferred payment method
  - Authorise attendance for trips and events
- ...and much, much more.

## Speech, Language and Communication

Language is an important skill that allows a person to communicate. A child begins to develop language even before she can use words, as seen by a baby who cries to get her needs met. A delay in language skills can cause frustration for a child as well as miscommunication about what she may be trying to convey. Language development is important to a child in order to adequately exchange information with others in a meaningful way.

At Greatstone School Nursery, we use Makaton - If your child is learning English or if they are reluctant to speak, please encourage the use of these words and actions.



## **Tips**

Simple things you could do at home with your child:

- Have conversations with your child. This may sound so obvious, but it is probably the most valuable thing that you can do, as it supports your child's language development.
- Ensure that you repeat back any mispronounced words, the correct way to model to your child.
- Read stories together every day. Look at the pictures and talk about the story.
- Sing songs and nursery rhymes, including number rhymes. Make up your own rhymes using your child's name.
- Get out and about and have fun!

## **Policy on Outdoor Play**

All children will be given the opportunity to play outside throughout most of the day whatever the weather. It is important that you dress your child for school appropriately: warm clothes and waterproof coat when it's cold and wet; sun hat and sun screen when it's sunny. Children get wet, muddy and messy when they play outside. We teach children how to minimise how messy they get and they do get better at this as they get older, but it is part of their learning and development – they will get a bit dirty when they are playing in mud. We will not compromise on allowing children to play outdoors as we believe it to be an essential component of young children's learning and development. Children must be allowed to experience the world around them in a full, messy, muddy, wet environment if they are to make useful meaning of it. Getting wet does not cause us to catch a cold. If the cold virus is around, we will pick it up regardless of whether we are wet or dry.

## **Toileting**

We will work with you when it comes to toilet 'training' your child. Discussions will be had regarding what you are doing to support your child at home and we will try to reflect these within the nursery and through positive praise.

Please do not hesitate to contact myself or any member of staff, if you have any further questions or concerns. In the meantime, we hope you enjoy your time with us at Greatstone School Nursery!

*Nadia Leech*

Nursery Lead

